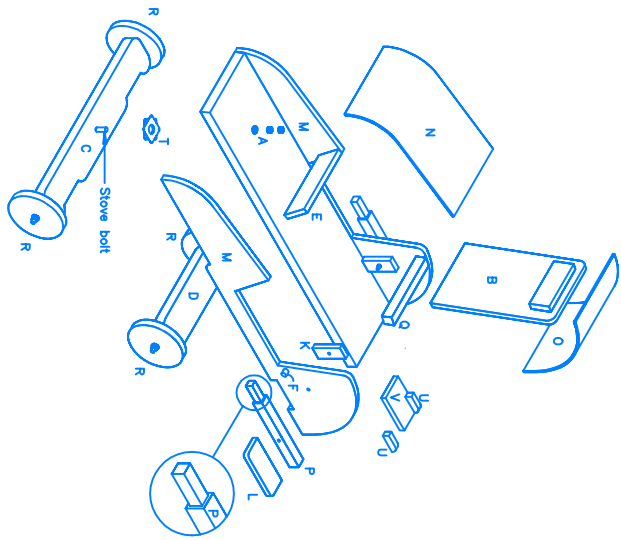
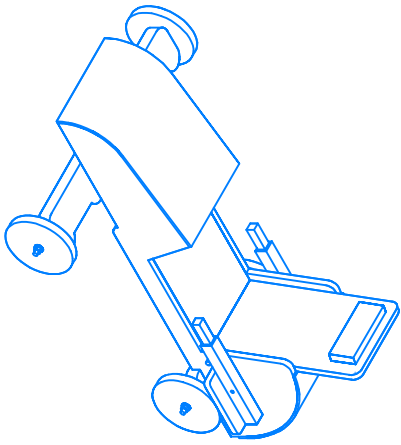


- 3) Glue and place pieces K on the insides of pieces M as shown (Fig 7) so the brake pivot holes line up. Nail through pieces K into M with 1 1/4" finishing nails. Glue the side edges of A and nail on pieces M with 2" common nails. Ensuring that bottom of A is flush with bottom cutouts on M. Blunt the ends of 2" nails to prevent splitting of pieces E and Q for the following procedure. Glue the ends of the cross member E and nail in position, through M, with 2" common nails. Glue the ends of Q and nail in position with 2" common nails. Glue the sides of B and place in position, resting against Q. Nail through M into B with 2" common nails.
- 4) Pre-drill pieces L using a 1/8" bit, with four holes each as shown (Fig 8). Split the edge of L. Place pieces L on pieces P with the edge flush and drill 1/2" into P with a 1/16" bit drilling through the holes in L. Countersink the holes in L so that the screws will be flush, with a 1/4" bit to a depth of 1/4". Glue the bottom face of P and screw L to P with #8 1 1/4" flathead screws. Bolt these brake assemblies to M with two 4" bolts, four nuts and washers as shown (Fig 9). Tighten the nuts so that the assemblies move, but are not loose.
- 5) Glue the top front and rear edges of M, the top edges of E and Q, and the front and rear ends of A. Nail on pieces N and X with 1 1/2" common nails. Dip the ends of pieces F and place in the holes in M to serve as a brake rest. Place the unit aside and allow glue to dry overnight.
- 6) Glue and nail pieces U to the edges of V as shown (Fig 10) for the push assembly, nailing through V and into pieces U with 1 1/2" common nails. Pre-drill V, with a 1/8" drill bit, glue and screw, centered to the underside of A with #8 2" flathead screws.
- 7) Attach the wheels R as shown (Fig 11). Drill a 1/8" hole through the rod S on the outside of the nut as shown (Fig 12) and insert the cotter key. Bend the cotter key to ensure that the nut never comes off. With a hacksaw, trim off the ends of the rod so that they stop 1/2" from the cotter key.
- 8) Fill exposed nail and screw holes with a suitable filler and sand. Apply paint to manufacturer's instructions. Do not use leaded paint for projects that will be around young children.

**On materials:**

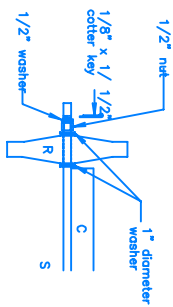
As this is a painted project, almost any type of plywood can be used. The 2x6 should be totally free of knots that would weaken the steering mechanism.



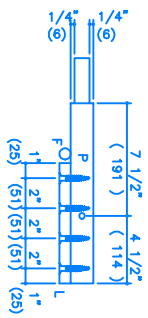
**EXPLODED VIEW**  
**FIGURE 7**



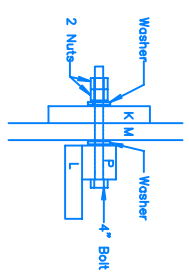
**PUSH ASSEMBLY**  
**FIGURE 10**



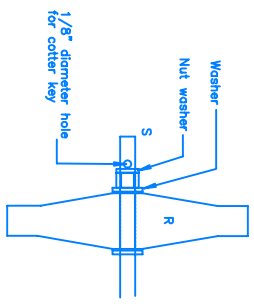
**FIGURE 11**



**FIGURE 8**



**FIGURE 9**



**FIGURE 12**